

To: All Interested Parties

Re: **National Poll shows Bipartisan Support for Roadless Rule Protecting National forests/Roadless Lands from New Roads, Timber Harvesting and Development**

## NATIONAL SURVEY OVERVIEW

FEBRUARY 2, 2026

Susquehanna Polling and Research, Inc., rated the #1 most accurate polling firm in the USA by Real Clear Politics for its polling in the 2020 Presidential election, and #2 in the nation from 2014-2022<sup>1</sup>, today releases a new national survey testing attitudes and opinions toward the Roadless Rule regulation, and the extent to which voters support or oppose repeal of Roadless Rule – or what has become a stalwart and effective regulatory tool in managing unnecessary development, additional timber harvesting and new road construction on roadless lands.

The poll, commissioned by The Pew Charitable Trusts, is a random, representative sample of 1,200 likely voters in the USA, weighted by states' population estimates and balanced by age, political party affiliation, ethnicity and other factors. Conducted December 2-14, 2025, using live telephone agents, the poll has a margin of error of +/-2.83% at the 95% confidence level. The poll's key findings/takeaways include:

## VOTERS VALUE CONSERVATION OF NATIONAL FORESTS – AND WANT ROADLESS LANDS MOSTLY UNDEVELOPED, INTACT AND OFF LIMITS TO TIMBER HARVESTING OR NEW ROAD CONSTRUCTION

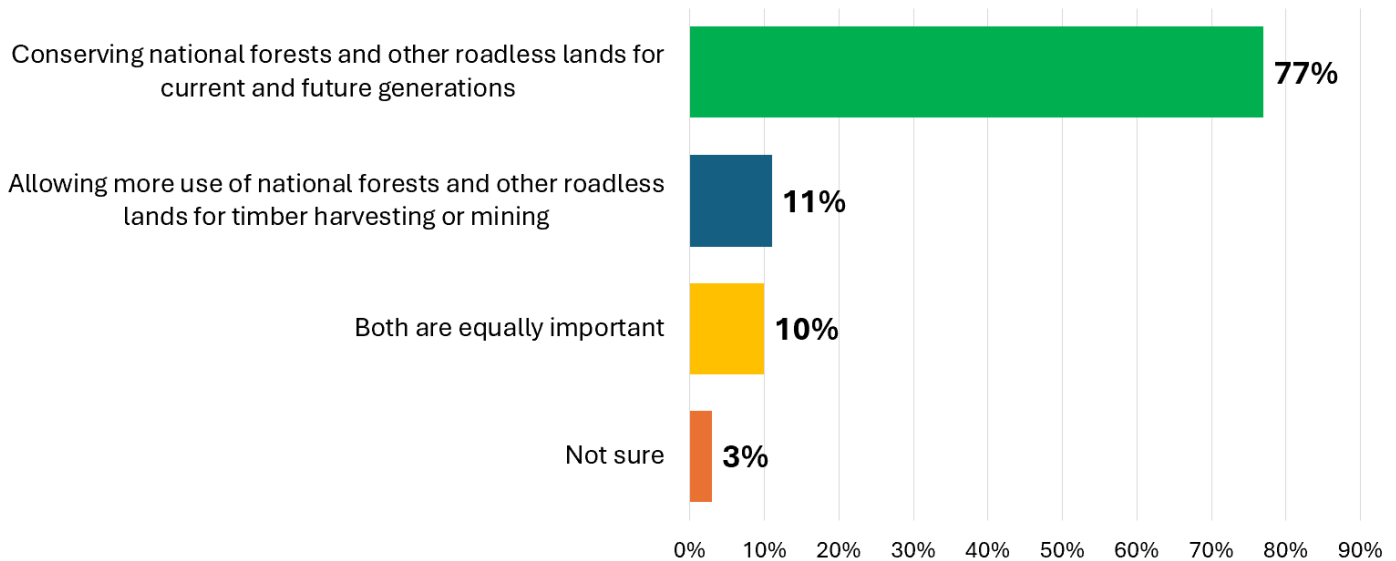
Voters place a high premium on the continued conservation and protection of both national forests and other roadless lands throughout the USA. These lands, consisting of nearly 60 million acres, or about one third of National Forest System lands across 39 states, are rated “extremely” important by poll respondents when it comes to protecting clean water sources and providing places where people can enjoy outdoor activities. For instance, when poll respondents are asked to think about national forests:

- 88% believe it is “very” important to protect clean water sources for communities, including 7% “somewhat” important: **Total 95% important.**
- 82% believe it is “very” important to provide places where people can enjoy activities, like hiking camping, hunting and/or fishing, including 14% “somewhat” important: **Total 96% important.**
- When it comes to a choice between [the] preservation of national forests and other roadless lands (for outdoor recreation and wildlife habitat), or making roadless lands available for timber harvesting (Q3), 77% believe “*conserving national forests and other roadless lands for current/future generations*” is paramount. Only 11% believe “*...opening up more roadless lands for timber harvesting and/or mining*” should be the priority. Support for conserving these national forests is broad-based and bipartisan, including 80% of self-identified Democrats, 71%, of Republicans and 80% of Independent and unaffiliated voters. Even 72% of voters who cast ballots for Donald Trump in the 2024 election prefer national forests and other roadless lands be kept off limits to new timber harvesting.

---

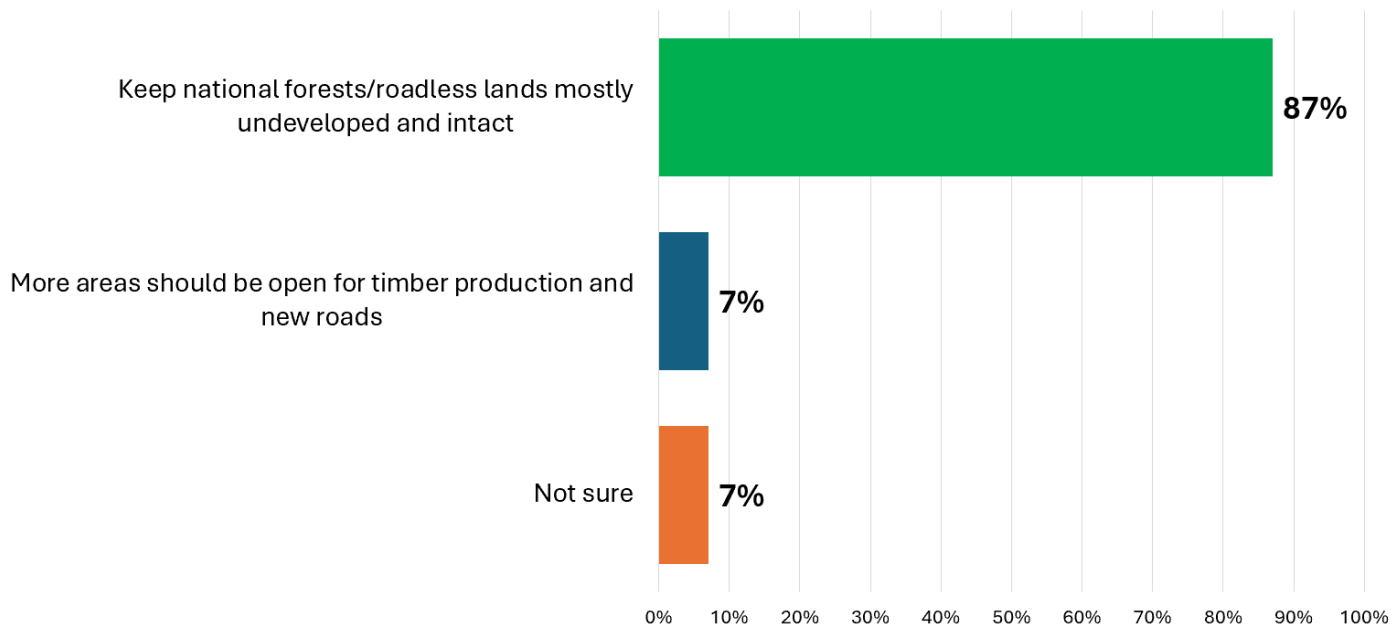
<sup>1</sup> <https://www.realclearpolitics.com/rcp-pollster-scorecard/>

**Q3. Some areas of our national forests are available for timber harvest, while others are reserved for things like outdoor recreation and wildlife habitat. Which is more important when it comes to managing national forests, even if neither are perfect?**



- In a related question (Q4), 87% believe some areas in national forests should be kept *mostly undeveloped and intact*, while only 7% prefer the alternative viewpoint that: “...*more areas should be open for timber production and new roads*”. The percentage who wants these areas of national forests to be undeveloped and remain mostly intact includes 84% of Republicans, 88% of Democrats, 90% of Independent and unaffiliated voters and 84% of voters who cast ballots for Donald Trump in the 2024 election.

**Q4. Should some areas in national forests be kept mostly undeveloped and intact, or should more areas be open to timber production and construction of new roads?**

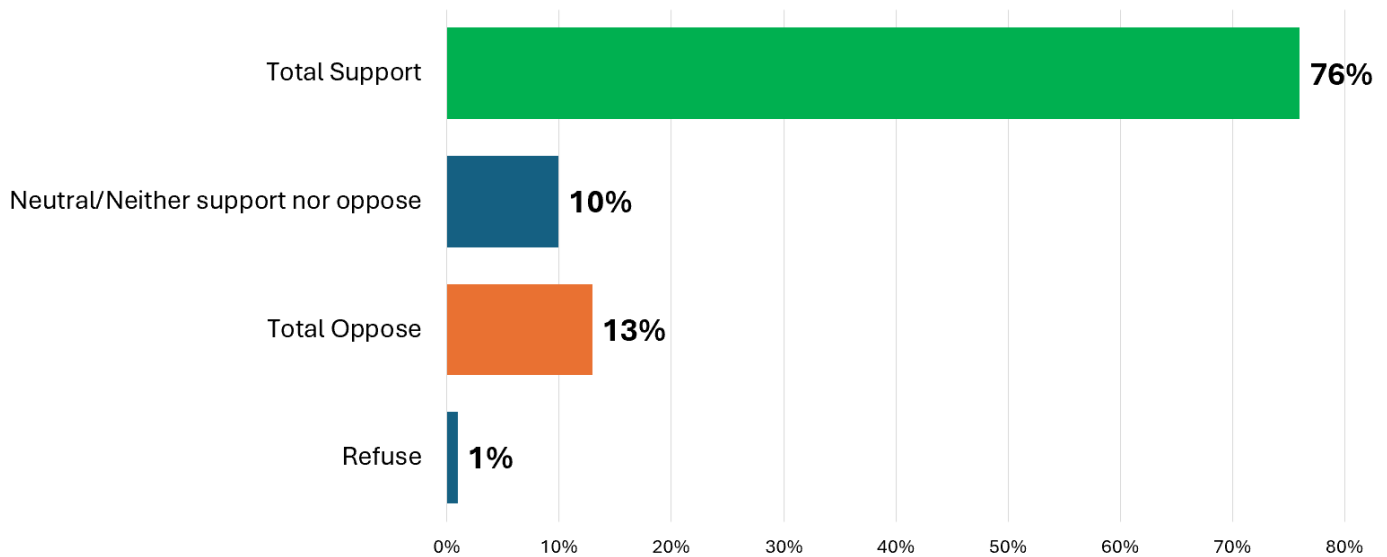


**VOTERS OVERWHELMINGLY SUPPORT THE ROADLESS RULE, OPPOSE [ITS] REPEAL AND REJECT KEY ARGUMENTS MADE BY REPEAL ADVOCATES LIKE THE U.S. DEPARTMENT OF AGRICULTURE**

Overwhelming percentages of voters across the political and socio-economic spectrum support the continued use of the Roadless Area Conservation Rule, adopted more than 20 years ago to both conserve and protect nearly 60 million acres of National Forest System lands across 39 states from additional road construction, development and timber harvesting. Moreover, strong majorities oppose repeal of the Roadless Rule, even after hearing key arguments advanced by proponents [of repeal] about why opening up roadless lands in the National Forest System is in the best interests of the American public. These arguments favoring repeal use as its foundation the premise that opening up roadless lands to new timber harvesting is both good for the economy and will lead to more effective prevention of forest fires. For instance, consider the following:

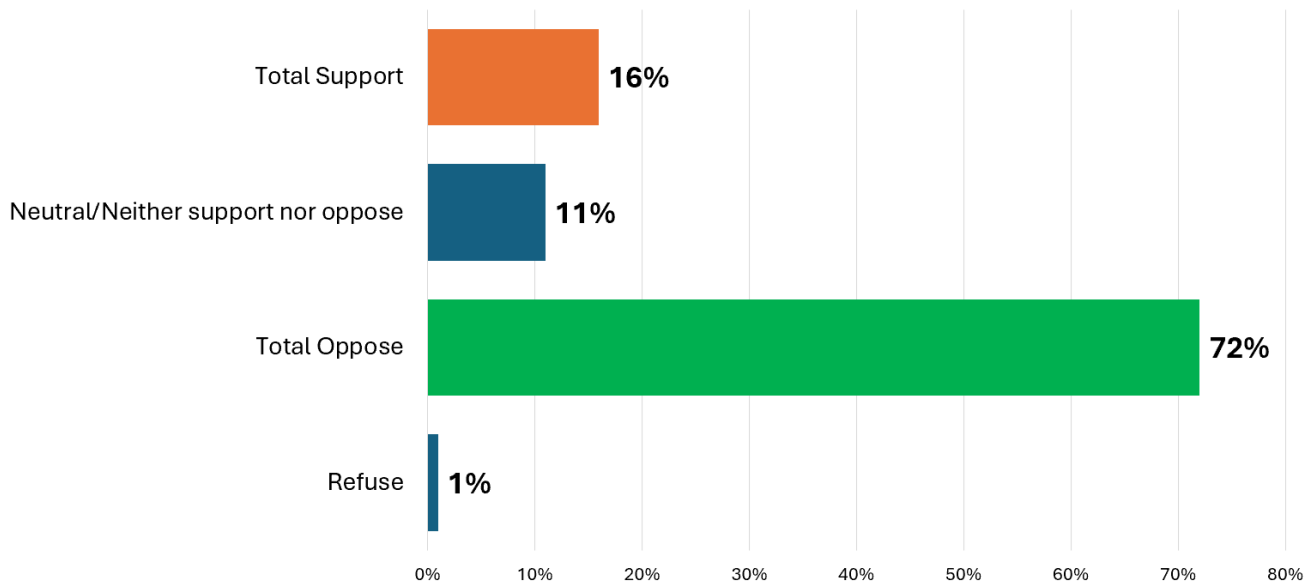
- By a strong margin of 76% to 13% (Q9), likely voters support the Roadless Rule regulation adopted more than 20 years ago designed to conserve and protect nearly 60 million acres of National Forest System lands from additional road construction and timber production. Intensity of support shows that of the 76% who support the Roadless Rule, 61% “strongly” support [it]. Support for the Roadless Rule is broad-based, bipartisan and includes strong majorities regardless of party affiliation, age, geographic region of the USA, ethnicity, gender, or educational background. Among Republicans and Trump voters, 77% and 76% support the Roadless Rule, respectively. Among Democrats and Independents, support is 76% and 73%, respectively.

**Q9. Do you support or oppose the Roadless Rule regulation adopted more than twenty years ago, which is designed to both conserve and protect nearly 60 million acres of National Forest System lands across 39 states from additional road construction, development and timber production?**



- When informed the U.S. Department of Agriculture published its intent to repeal the Roadless Rule (Q11), which would then allow for new roads and/or timber harvesting on roadless lands in national forests, 72% of likely voters **oppose** repeal; only 16% **support** repeal of the regulation. Opposition to repeal of the Roadless Rule is broad-based and bipartisan and includes strong majorities in most key demographic groups, including 71% of Republicans, 73% of both Democrats and Independents, and 71% of Trump voters.

**Q11. In August, the U.S. Department of Agriculture published its intent to repeal, or rescind, the Roadless Rule regulation, which would then allow for additional road construction, development and timber harvesting on roadless lands in national forests? Do you support or oppose repeal of this regulation?**

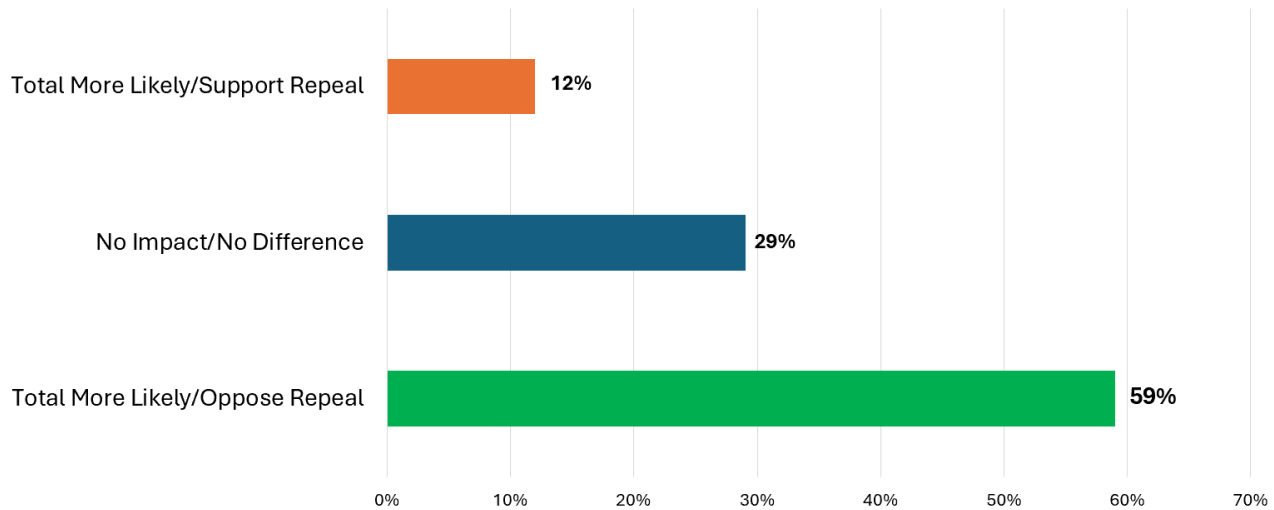


- When voters are presented with key arguments made by both proponents of repeal [of Roadless Rule] and its opponents, nearly 7 in 10 likely voters (or 69%) choose the argument made by opponents of repeal as the one that comes closest to their own viewpoint. Likely voters across the political spectrum share the viewpoint that repeal is a bad idea, including 67% of Republicans, 70% of Democrats, 72% of Independents and even 69% of Trump voters. For instance:
  - **69% oppose repeal:** *“Some people say repeal of the Roadless Rule is a bad idea because it protects millions of acres of roadless forest lands in the National Forest System and helps preserve/protect both clean drinking water supplies and wildlife habitat from unnecessary timber development and road construction”, or...*
  - **18% support repeal:** *“Some people say repeal of the Roadless Rule is a good idea because it is an overburdensome regulation that hampers responsible timber production and if repealed, will allow roadless forest lands to be better managed against the threat of forest fires, or...*
- In Q13, when voters are asked if repeal of the Roadless Rule is an issue that could influence their vote choice [for a Member of U.S. Congress], 59% of likely voters say they’d be *“more likely”* to vote for a Member of U.S. Congress who **opposes** the repeal of the Roadless Rule; only 12% would vote for a Member of Congress who **supports** repeal. Again, support for a Member of U.S. Congress who opposes repeal includes majorities of likely voters across the political spectrum, including 56% of Republicans, 61% of Democrats, 59% of Independents and 58% of voters who cast ballots for Donald Trump in the 2024 election.

**Q13. Would you be more likely to vote for a Member of U.S. Congress who...**

**Supports the repeal of the Roadless Rule regulation to allow for additional timber production, or...**

**Opposes the repeal of the Roadless Rule regulation to protect millions of acres of roadless forest lands from timber production and road construction**



- 
- Other prominent findings of the poll include:
    - Approximately 3 in 10 (or 31%) of likely voters have visited one of the country's 154 national forests in the last 12 months.
    - A combined 53% of poll respondents say the U.S. Forest Service is doing either an "excellent" or "good" job managing national forests and grasslands throughout the country; 28% believe the U.S. Forest Service is doing either a "fair" or "poor" job.
    - A combined 26% of poll respondents say they read or heard something about the Roadless Area Conservation Rule prior to completing the survey – including 5% who heard and/or read "a lot" and 21% who read and/or heard "a little".
    - A combined 91% of poll respondents think it is important that national forests "*contribute to the local economy through tourism*" – including 63% who think it is "*very*" important.
    - A combined 60% of poll respondents say they participated in a recreational activity in the last 5 to 10 years to support national forests. Most popular activities include hiking (35%), fishing (19%), hunting (7%) and camping (6%).
-