

# Health Impact Project 2014 Call for Proposals Demonstration Project Grant Webinar

March 5, 2014

A collaboration of the Robert Wood Johnson Foundation and The Pew Charitable Trusts.

# Purpose of the Call

- Introduce Health Impact Project
- Define health impact assessment
- Outline the Call for Proposals
- Explain the application process
- Learn how to “screen” for HIA topics
- Questions and answers



Bethany  
Rogerson



Arielle McInnis-  
Simoncelli

All materials, including the Call for Proposals, can be found at: [www.healthimpactproject.org](http://www.healthimpactproject.org).

# Health Impact Project

---

## **Who We Are:**

- A collaboration of RWJF and Pew

## **Purpose:**

- Promote the use of HIA and build the field in the U.S.
- Make the case for institutionalization of HIA

## **How We Do It:**

- Funding a series of demonstration projects; doing HIA ourselves
- Providing technical assistance to support new HIA practitioners
- Serving as neutral convener – connect people to resources
- Garnering lessons learned to identify potential levers for institutionalizing HIA

# HIA Addresses Determinants of Health



# Asthma, Obesity, Diabetes...



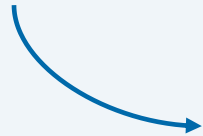
Housing

Exercise...



# Defining Health Impact Assessment: HIA Addresses Determinants of Health

*How might the proposed  
project, plan, policy*



*affect*

Housing  
Air quality  
Noise  
Safety  
Social networks  
Nutrition  
Parks and natural space  
Private goods and services  
Public services  
Transportation  
Livelihood  
Water quality  
Education  
Inequities



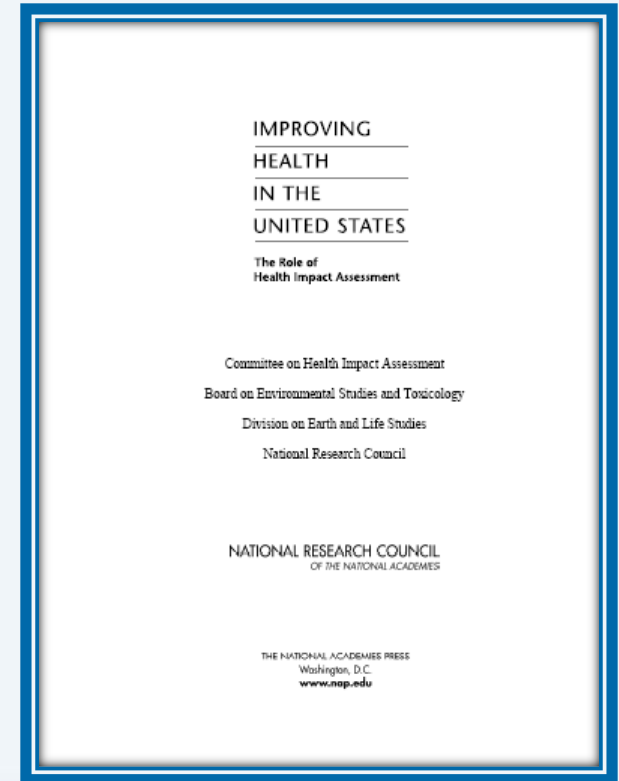
*And potentially lead to  
predicted health  
outcomes?*



# Defining Health Impact Assessment: National Research Council definition

“A systematic process that uses an array of data sources and analytic methods and considers input from stakeholders to determine the potential effects of a proposed policy, plan, program or project on the health of a population and the distribution of those effects within the population. Health impact assessment provides recommendations on monitoring and managing those effects.”

*National Research Council, 2011*



# HIA is...

---

- Conducted to inform a specific decision
- Uses a broad analytic framework
- Emphasizes collaboration with stakeholders
- Pragmatic
- Focused on solutions



# The Value of HIA: Policymaker Reactions

***“The HIA revealed gaps in the data we needed to make good decisions”*** - Stacie McIntosh, U.S. Bureau of Land Management

***“The HIA has helped neutralize conflict by bringing different groups and disciplines together.”*** - Janet Miller, Wichita city council member

***“HIA is a tool to help us figure out where to ... use limited resources to benefit the greatest number of people.”***

- Denise Provost, MA State Rep

***“An HIA is a Rosetta Stone...it’s a translator. ... we’re asking what people think, we’re saying we care what they have to say and we’re making the effort to do it.”*** - Cleveland Councilman Joe Cimperman

# The Value of HIA: Practitioner Reflections

---

- **Informed the decision** –“HIA recommendations were 100% adopted into the growth plan”
- **Education and culture change** –“It brought health concerns into the discussion; decision-makers/planning department now routinely thinking about health”
- **“Addressed community concerns”**
- **“New partnerships** between health and other agencies”

# HIA Examples: Previous Grantees

Where?	Who?	What?
Minnesota	Nonprofit	School integration legislation
Massachusetts	State health department	Highway redesign study
Oregon	Non-profit	State farm-to-school legislation

For more examples:

[www.healthimpactproject.org/hia/us](http://www.healthimpactproject.org/hia/us)

# Steps of HIA



# HIA Examples:

## Washington Highway 99 Subarea Plan

**HIA Decision Target:** County's development of a plan for redevelopment along a suburban corridor along Hwy 99 in WA.

**HIA Team:** county public health and planning departments.

### Findings:

- *Mixed use:* conflicts between arterial and freeway traffic and plan's intent to create walkable/bikeable community.
- *Air quality:* plan would increase walking/biking near pollution hot spots.
- *Traffic risks:* corridor contains 4 of the highest volume intersections, with high volume of accidents.

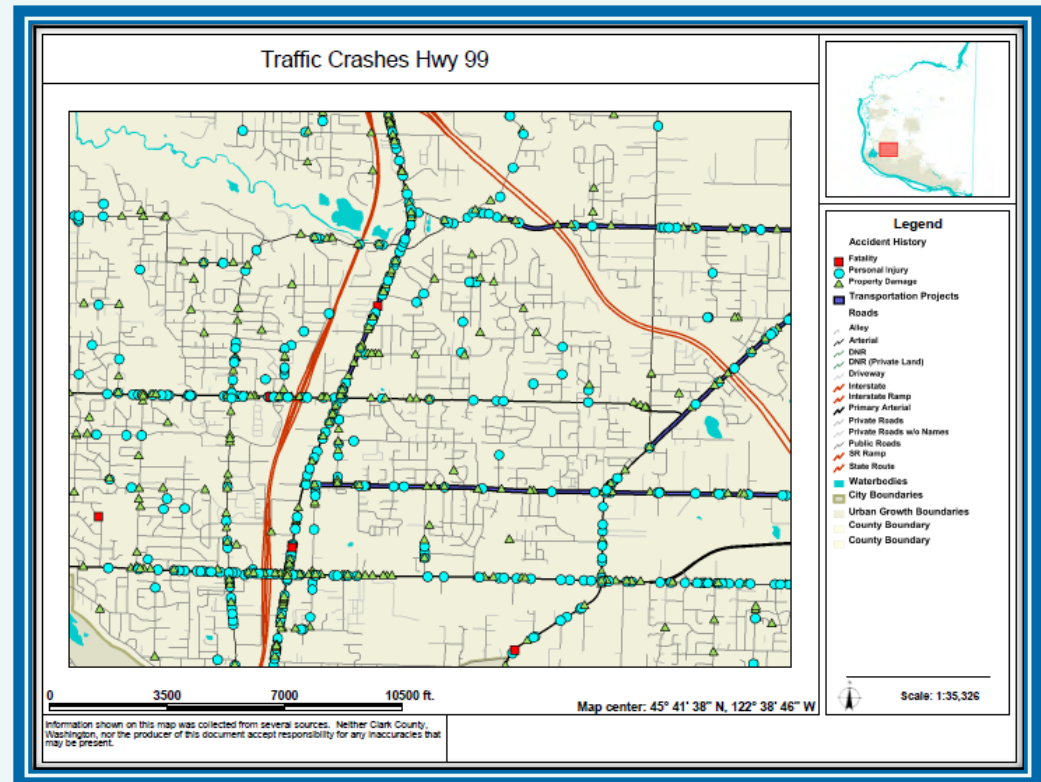


# HIA Examples:

## Washington Highway 99 Corridor Plan

### Recommendations and Outcomes:

- *Mixed use*: plan adopted idea of focused development in walkable hubs throughout the region, to minimize conflicts with high-volume arteries and allow more exercise.
- *Air quality*: building modifications for residences nearest major traffic.
- *Traffic risks*: prioritize traffic calming measures in the 4 road segments identified as posing the greatest risk



# HIA is NOT . . .

- Used to make the case for why a policy, program or project should be proposed.
- An assessment to understand the impacts of a program or policy once it has been implemented.
- A community assessment tool (i.e., CHIP & CHA), but those are used during assessment stage of HIA.





# Call for Proposals – The Basics

---

## **Up to 11 demonstration projects**

- Six from throughout the U.S. and its territories
- Three from Minnesota, supported by Blue Cross and Blue Shield of Minnesota Foundation
- Two from California, supported by The California Endowment
- Up to \$100,000
- Projects must be completed in 18 months

# General Eligibility Criteria

---

## **Applicant organization must be. . .**

- A state, tribal or local agency; or
- A tax-exempt educational institution; or
- Tax-exempt organizations that are not private foundations or non-functionally integrated Type III supporting organizations.

## **In addition, applicant organization must. . .**

- Be located in the United States or its territories; and
- Address a proposed local, tribal or state policy, program or project in the US or its territories or a federal decision process in which the effects are limited to a specific state, local community or region.

# Call for Proposals – Demonstration Projects Details

---

- HIA experience is **not** required.
- We will provide training and technical assistance:
  - optional HIA training in Washington, DC (May 28, 2014)
  - a specialized package of training and technical assistance in HIA
  - consultation with experts in a specific subject area required for the analysis
- No match or in-kind contribution required

# Summary of Grant Types

	Demonstration Project	HIA Program
Grants Available	6 nationwide 3 MN, 2 CA	5 nationwide, 1 CA
Funding Level	Up to \$100,000	Up to \$250,000
Timeframe	Up to 18 months	Up to 24 months
Deliverables	1 HIA	1+ HIAs, HIA program
Technical Assistance and Support	Training and ongoing TA provided	Learning community
HIA Experience	None required	At least one complete HIA
Matching Fund/In-Kind Contribution Requirement	None required	At least \$100,000
Application Steps	1 brief and 1 full proposal	1 brief and 1 full proposal

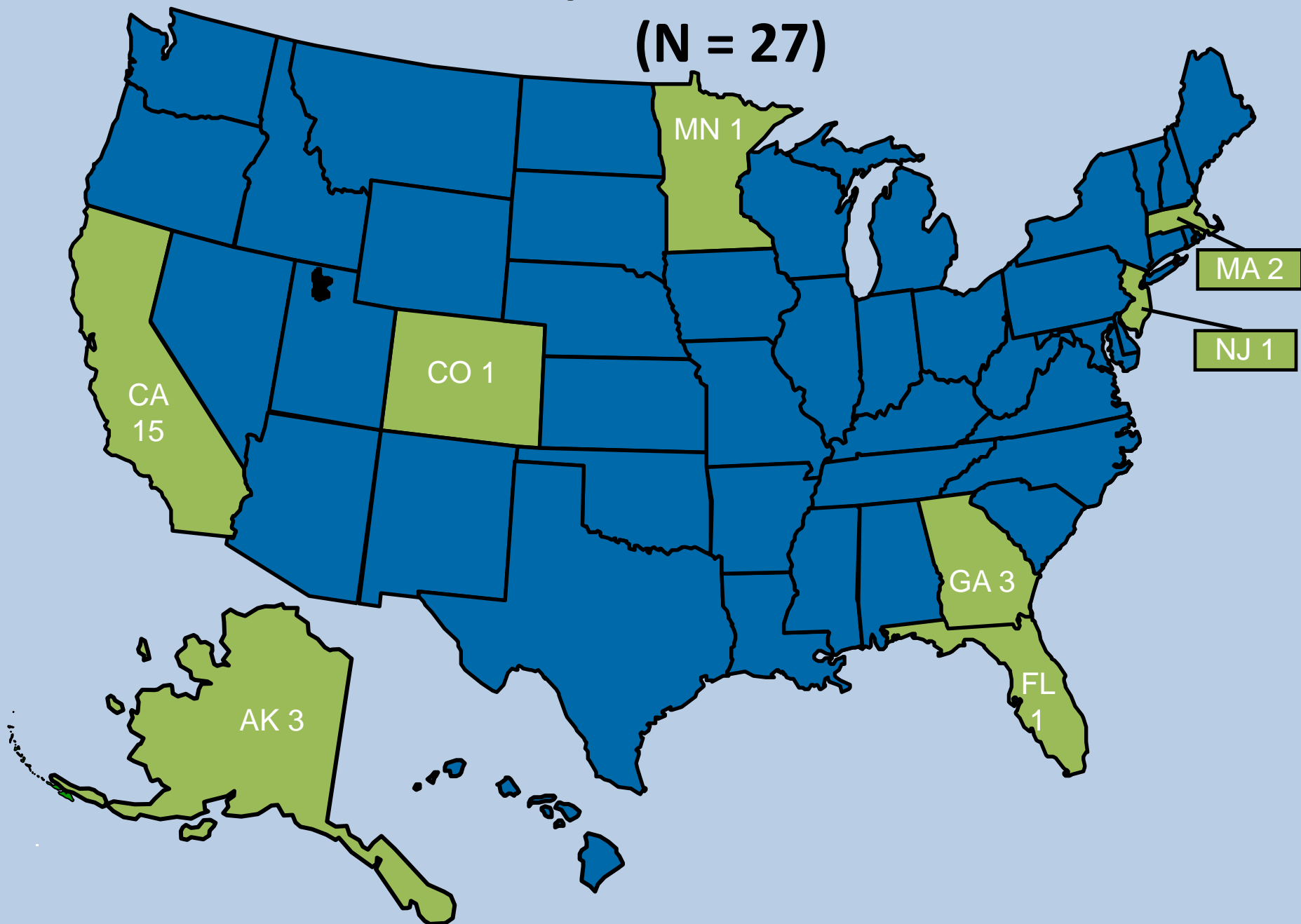
# Selection Criteria

---

*Please refer to the CFP  
for complete selection criteria.*

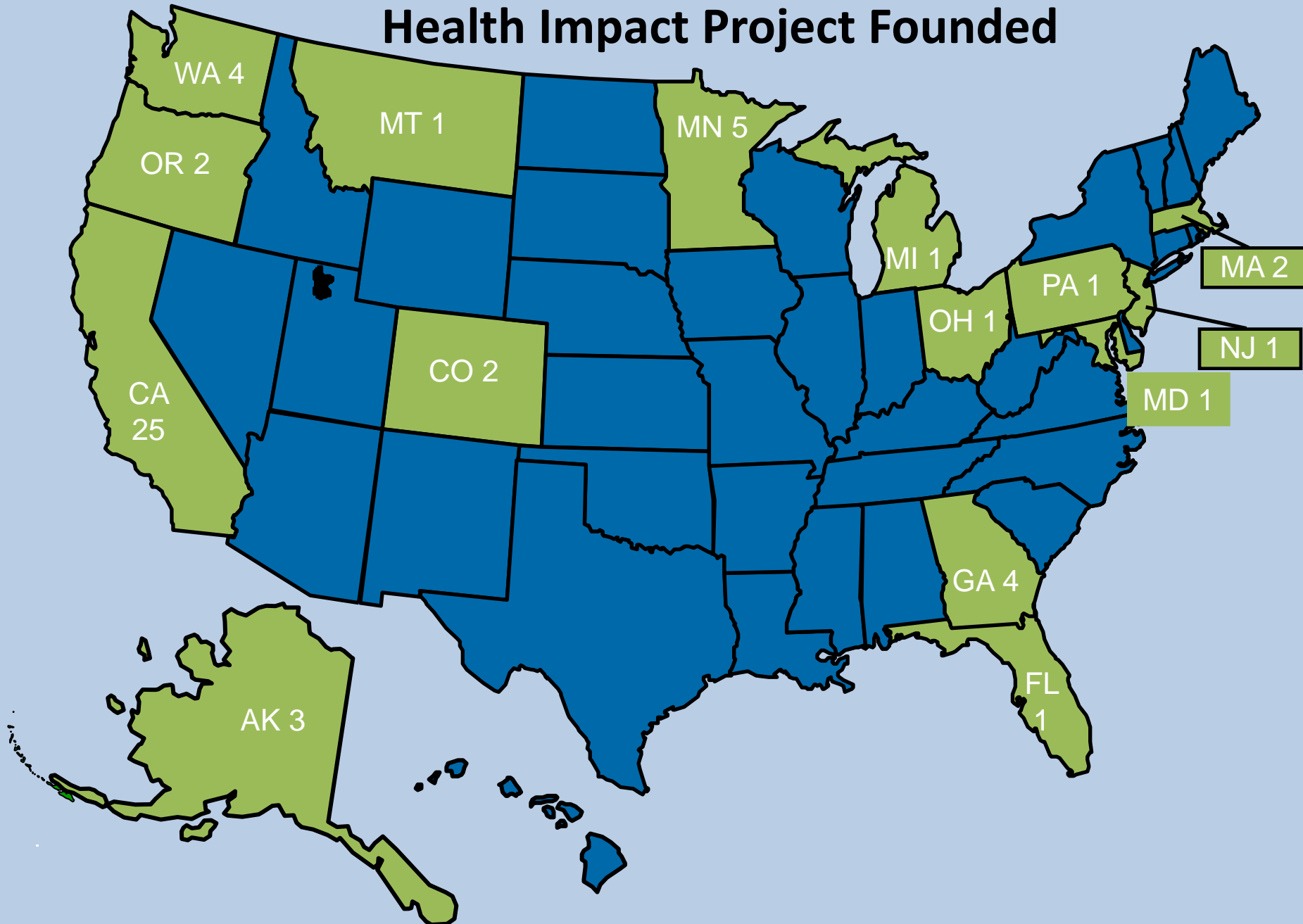
# Completed HIAs 2007

(N = 27)



# Completed HIAs 2009 (N = 54)

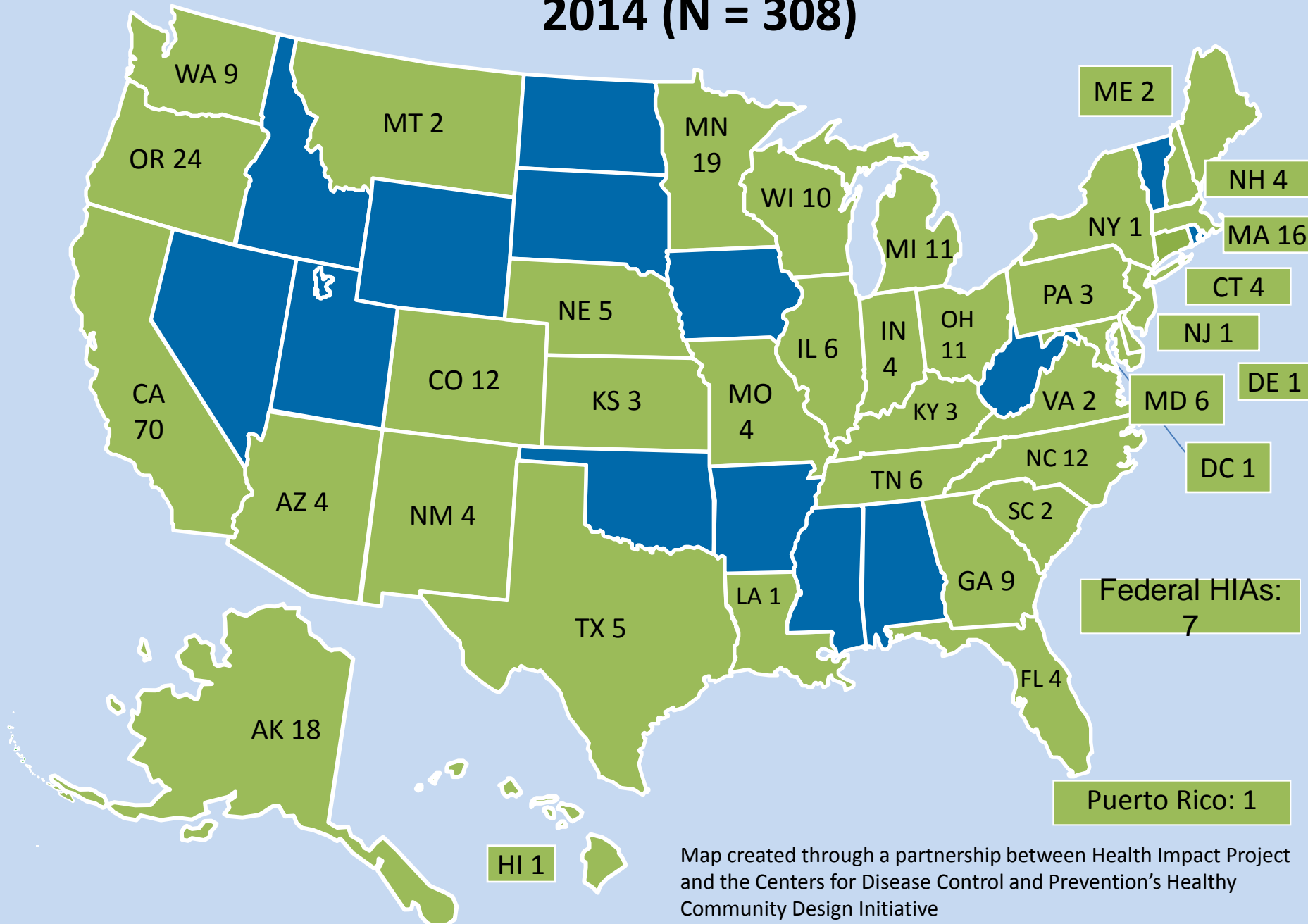
## Health Impact Project Founded





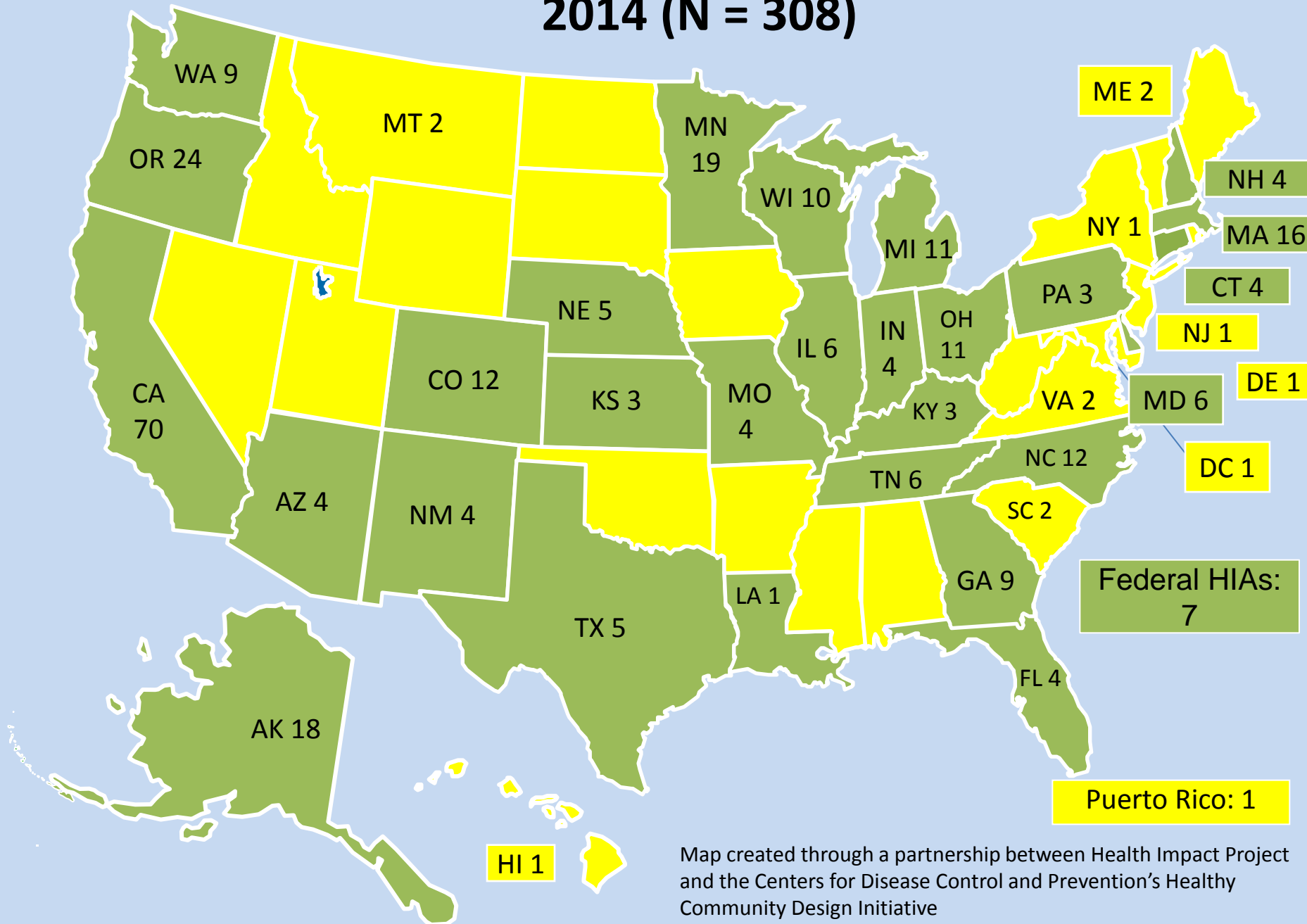
# Completed and In Progress HIAs

## 2014 (N = 308)



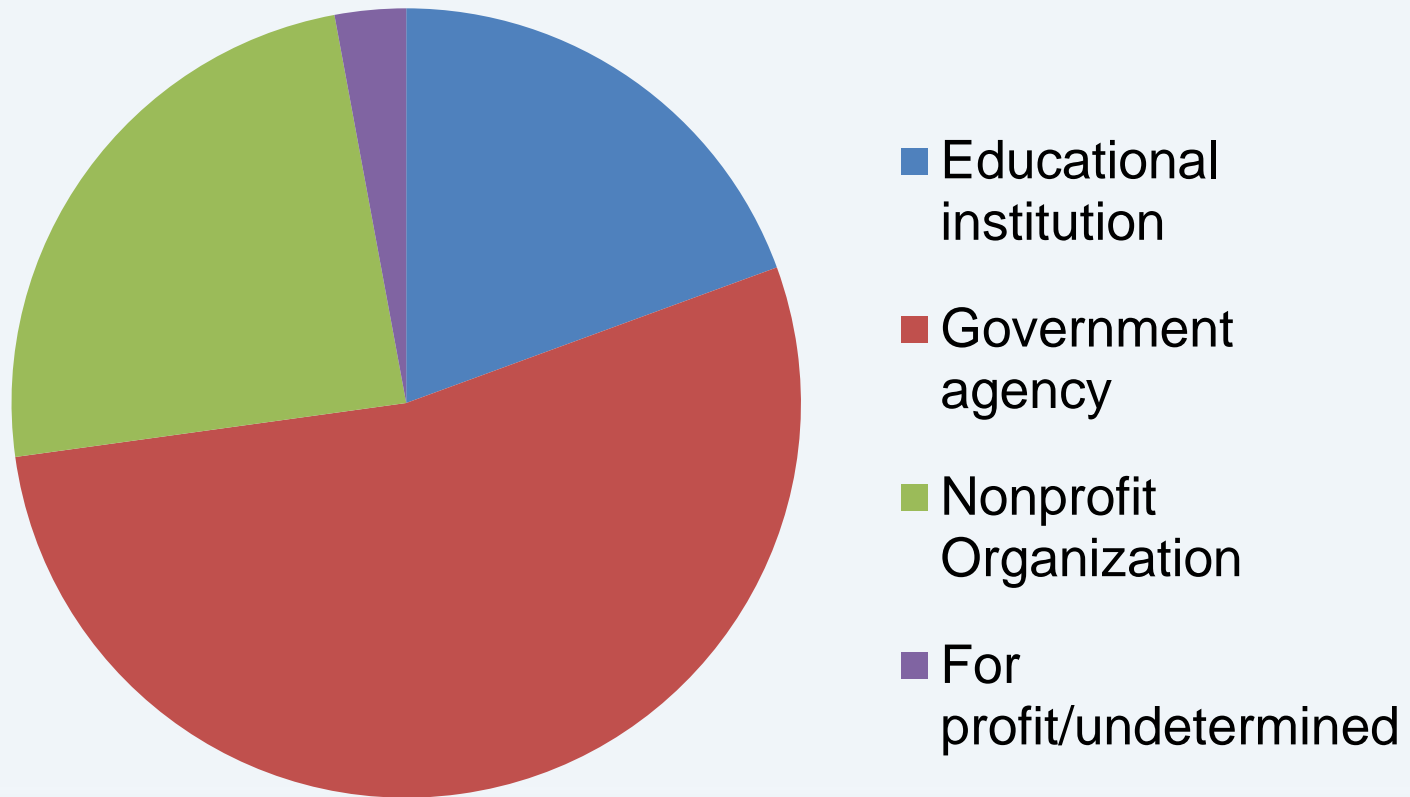
# Completed and In Progress HIAs

## 2014 (N = 308)



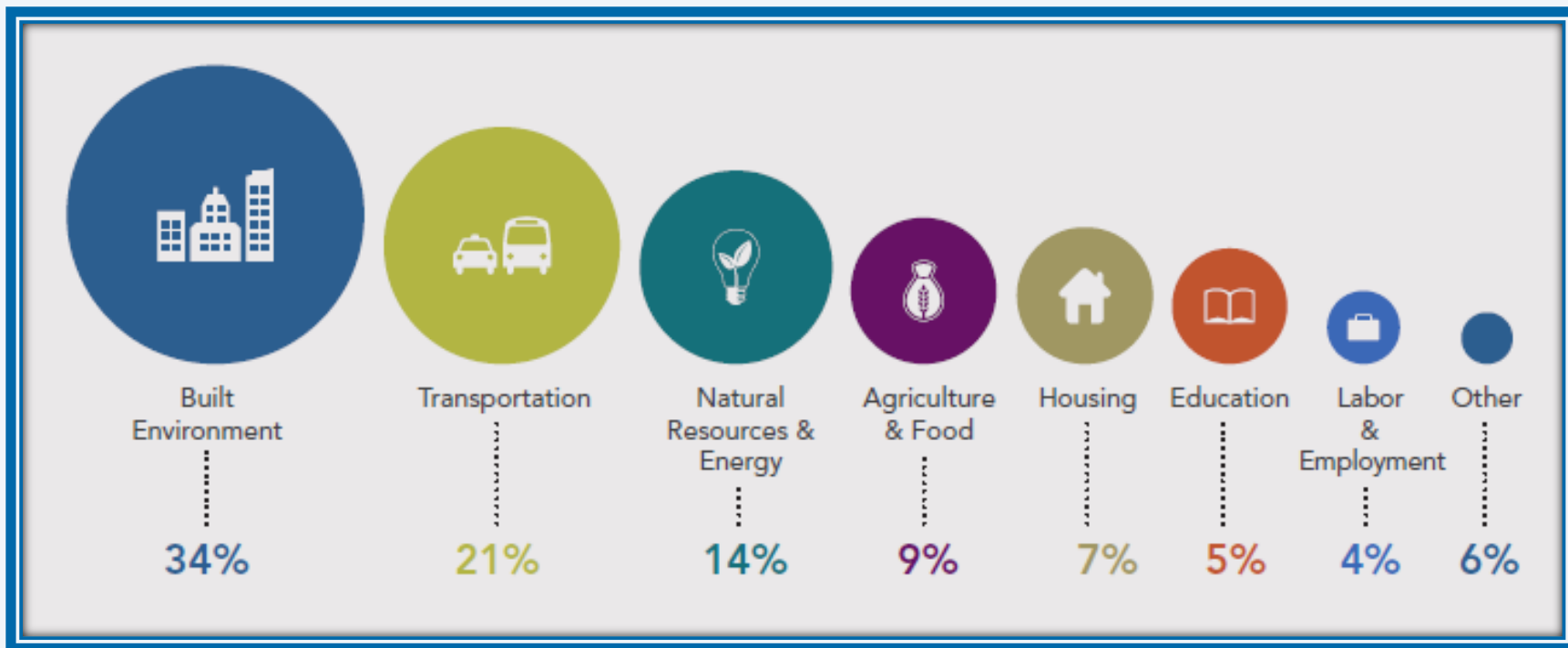
Map created through a partnership between Health Impact Project and the Centers for Disease Control and Prevention's Healthy Community Design Initiative

# What types of organizations lead HIAs?



*Preference will be given to HIAs proposed by a federally recognized U.S. tribe.*

# What Topics Have HIAs Addressed?



*Preference will be given to proposed HIAs on innovative topics and on decisions other than land use, built environment, or transportation.*

# Minnesota and California-Specific Criteria

---

## Minnesota:

- Preference will be given to HIAs focused on community development, education, social or economic policies relevant to health and health equity in Minnesota.
- Additional preference will be given to HIAs specifically examining the links between health and school discipline and/or criminal justice policies.

## California:

- Current grantees of The California Endowment's Building Healthy Communities (BHC) initiative will receive preference for the HIA demonstration project grants.

# 1. The HIA will inform a *proposed* policy, program, plan, or project.

Consider..

- Is a decision under active consideration by a decision-making body?
- Will a decision be reasonably expected within 1-3 years?
- If a decision has already been made, are there decisions about implementation that an HIA could inform?



## 2. Address an issue important to health and health equity

- Describe why the topic you seek to inform has important health implications.
- Consider how potential health risks and benefits will be distributed across the affected population.





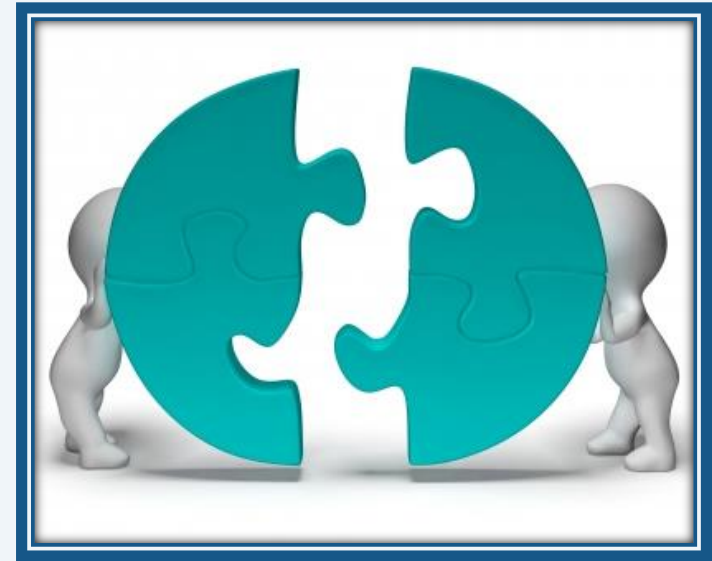
### 3. Bring health “to the table” and broaden consideration of health impacts

- Are health issues immediately obvious?
- Is health already part of the conversation?
- Consider whether the discussion includes a broad set of health impacts and whether there are any nuances to examine or discuss further.



## 4. Stakeholder engagement

- Proposals should outline a strong, effective plan for involving stakeholders—including community members and community-based organizations, private-sector stakeholders, policy-makers, and other relevant agencies and organizations—in each step of the HIA.



# 5. Decision-Maker Engagement

- Demonstrate a strong working relationship between the HIA team and the decision-maker(s), or a well-conceived plan for engaging the decision-maker(s) at each step of the HIA.



## 6. Commitment to a balanced look at risks and benefits

- Show commitment to a scientifically sound evaluation of the available evidence, and an impartial appraisal of the risks, benefits, trade-offs, and alternatives involved in the decision, and demonstrate the applicant organization's credibility as a source of information on the decision addressed by the HIA.



# 7. Dissemination and implementation of recommendations

- Convey a clear strategy for disseminating the findings and advocating for adoption and implementation of the HIA recommendations, including the planned approach for building support for the HIA findings and recommendations among decision-makers, and the roles that stakeholders and partners will play in dissemination and advocacy.



## 8. Bridging health and non-health sectors

- Demonstrate potential for the HIA to build new and enduring partnerships between public health organizations and policy-makers in non-health sectors such that health will be more regularly factored into future decisions.





# 9. Resources: Budget, timeline, staffing plan

- Consider what staff and expertise will be needed to carry out the assessment, write the report, and engage stakeholders.
- Convey how your proposed HIA timeline overlaps with the decision-making timeline.
- Demonstrate involvement from senior leadership in your organization.
- Estimate other expenses at the brief proposal stage, including: stakeholder meetings, designing/printing the final HIA report and other materials, travel, etc.





# 10. Sustainability

- Demonstrate a strong history of engagement by the grantee, partners, and community-based organizations on the issue that the HIA addresses, and explain how each will continue to advocate for the recommendations beyond the conclusion of grant funding.



# What types of HIAs will we not fund?

---

- We will not offer general programmatic funding.
- Proposals that address only a single health issue will generally not be considered.
- We are not accepting proposals that focus solely on clinical health care issues.
- Proposals on private organization decisions, such as whether a nonprofit board should fund a particular initiative.

# Looking for topics?

- Local media
- Policy scans based on upcoming agendas, community input, or known health issues
- Meetings with multi-sectoral partners
- Local or regional conferences
- HIA workgroup or networks



# Screening Tools

1. <http://www.humanimpact.org/hia-tools-a-resources#screeninggettingstarted>
2. [www.hiaconnect.edu.au](http://www.hiaconnect.edu.au)
3. [www.nnphi.org](http://www.nnphi.org) <http://www.nnphi.org/program-areas/health-in-all-policies/health-impact-assessment/hia-resources-webinars-and-trainings>

HIA Screening Worksheet		
Screening Questions	Response and Supporting Facts	
<b>Project and Timing</b> <i>Has a project, plan or policy been proposed?</i> <i>Is there sufficient time to conduct an analysis before the final decision is made?</i>		
<b>Health Impacts</b> <i>Does the decision have the potential to affect environmental or social determinants that influence health outcomes? If so, which determinants?</i> <i>Would health inequities be impacted? In what ways?</i>		

**HIA Screening Worksheet**

Screening determines whether the HIA is likely to be useful and improve the health impacts of the project. It should be considered when screening potential projects. Questions will help organizations determine if a project is a good subject, and also help inform the scoping of the HIA. It takes approximately 30-60 minutes to complete.

1. What proposed policy, program or project is being considered by the decision-making body--such as a local, state, or federal government? How will your HIA inform?
2. Describe the decision-making process and timeline. What opportunities exist for incorporating HIA findings and recommendations in this process? Who are the key decision makers?

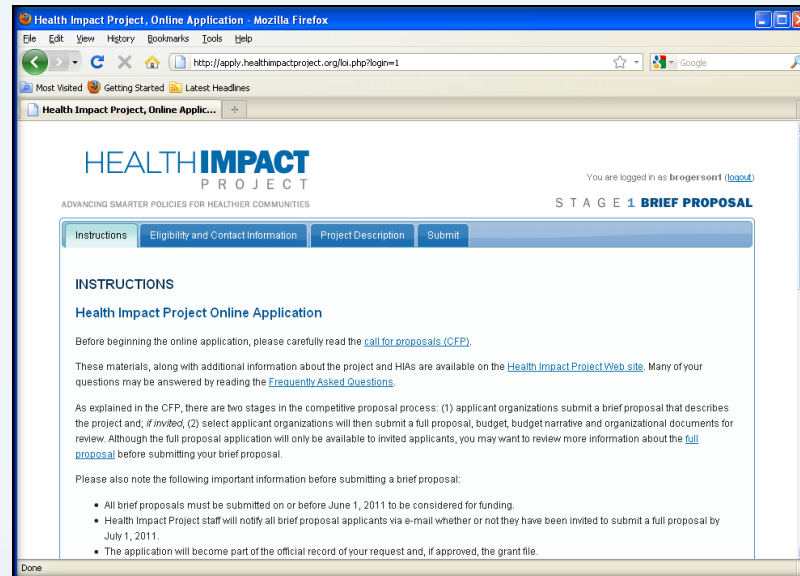
**Appendix 1 continued: Screening Tool for Health Impact Assessment**

10. Checklist

ANSWERS FAVOURING DOING A HIA	TO YOUR KNOWLEDGE	ANSWERS FAVOURING NOT DOING A HIA
<b>HEALTH IMPACTS</b>		
Yes / not sure	Does the initiative affect health directly?	No
Yes / not sure	Does the initiative affect health indirectly?	No
Yes / not sure	Are there any potentially serious negative health impacts that you currently know of?	No
Yes / not sure	Is further investigation necessary because more information is required on the potential health impacts?	No
No	Are the potential health impacts well known and is it straightforward to suggest effective ways in which beneficial effects are maximised and harmful effects minimised?	Yes
No	Are the potential health impacts identified judged to be minor?	Yes
<b>COMMUNITY</b>		
Yes / not sure	Is the population affected by the initiative large?	No

# Application Process: Getting Started

Proposals **must** be submitted through online application system: <http://apply.healthimpactproject.org>



# Online Application Tips:

---

<http://apply.healthimpactproject.org>

- Draft and save responses offline.
  - Special formatting will not appear in applications.
- Use the “save” function in the system often!
- The “preview” feature will allow you to view the questions and your responses on one page.

# Application Process

---

- **April 2, 2014:** Brief Proposal Due
- **April 30, 2014:** Invitation to Submit Full Proposal
- **May 28, 2014:** Optional HIA Training for Demonstration Project Applicants
- **June 25, 2014:** Full Proposal Due
- **September 30, 2014:** Award Notification

# Grantee Requirements

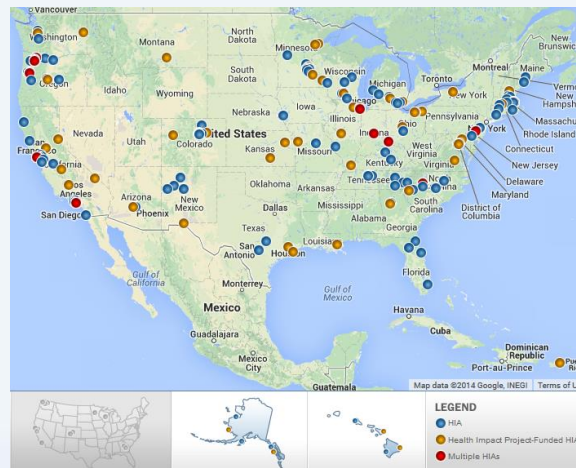
---

- Attend regular meetings with technical assistance partners and project staff
- Complete HIA steps
- Submit narrative and financial grant reports
- Attend the grantee and national meeting in Washington, DC (Spring 2015)
  - Applicants should include travel to this meeting in their project budget.



# Next Steps

- Look at examples: [www.healthimpactproject.org/hia/us](http://www.healthimpactproject.org/hia/us)
- Read the CFP
- Start an application: <http://apply.healthimpactproject.org>



# Questions?

---

Phone: **202-540-6012**

E-mail: **healthimpactproject@pewtrusts.org**

